

Glypican 3 (GPC3) Antibody (C-term)
Purified Rabbit Polyclonal Antibody (Pab)
Catalog # AP6340D**Specification**

Glypican 3 (GPC3) Antibody (C-term) - Product Information

Application	IF, WB,E
Primary Accession	P51654
Reactivity	Human, Mouse
Host	Rabbit
Clonality	Polyclonal
Isotype	Rabbit IgG
Calculated MW	65563
Antigen Region	529-560

Glypican 3 (GPC3) Antibody (C-term) - Additional Information**Gene ID** 2719**Other Names**

Glypican-3, GTR2-2, Intestinal protein OCI-5, MXR7, Secreted glypican-3, GPC3, OCI5

Target/Specificity

This Glypican 3 (GPC3) antibody is generated from rabbits immunized with a KLH conjugated synthetic peptide between 529-560 amino acids from the C-terminal region of human Glypican 3 (GPC3).

Dilution

IF~~1:10~50

WB~~1:1000

E~~Use at an assay dependent concentration.

Format

Purified polyclonal antibody supplied in PBS with 0.09% (W/V) sodium azide. This antibody is prepared by Saturated Ammonium Sulfate (SAS) precipitation followed by dialysis against PBS.

Storage

Maintain refrigerated at 2-8°C for up to 2 weeks. For long term storage store at -20°C in small aliquots to prevent freeze-thaw cycles.

Precautions

Glypican 3 (GPC3) Antibody (C-term) is for research use only and not for use in diagnostic or therapeutic procedures.

Glypican 3 (GPC3) Antibody (C-term) - Protein Information**Name** GPC3

Synonyms OC15

Function Cell surface proteoglycan (PubMed:[14610063](#)). Negatively regulates the hedgehog signaling pathway when attached via the GPI- anchor to the cell surface by competing with the hedgehog receptor PTC1 for binding to hedgehog proteins (By similarity). Binding to the hedgehog protein SHH triggers internalization of the complex by endocytosis and its subsequent lysosomal degradation (By similarity). Positively regulates the canonical Wnt signaling pathway by binding to the Wnt receptor Frizzled and stimulating the binding of the Frizzled receptor to Wnt ligands (PubMed:[16227623](#), PubMed:[24496449](#)). Positively regulates the non-canonical Wnt signaling pathway (By similarity). Binds to CD81 which decreases the availability of free CD81 for binding to the transcriptional repressor HHEX, resulting in nuclear translocation of HHEX and transcriptional repression (By similarity). Inhibits the dipeptidyl peptidase activity of DPP4 (PubMed:[17549790](#)). Plays a role in limb patterning and skeletal development by controlling the cellular response to BMP4 (By similarity). Modulates the effects of growth factors BMP2, BMP7 and FGF7 on renal branching morphogenesis (By similarity). Required for coronary vascular development (By similarity). Plays a role in regulating cell movements during gastrulation (By similarity).

Cellular Location

Cell membrane; Lipid-anchor, GPI-anchor {ECO:0000250|UniProtKB:P13265}; Extracellular side {ECO:0000250|UniProtKB:P13265}

Tissue Location

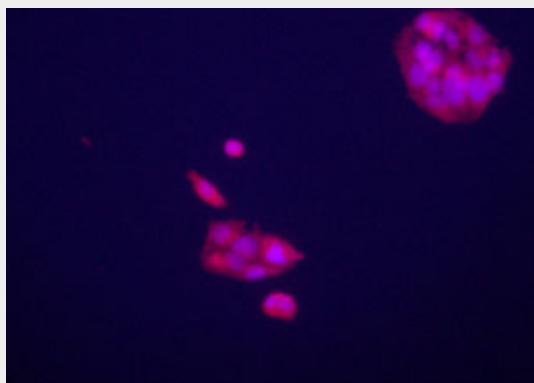
Detected in placenta (at protein level) (PubMed:32337544). Highly expressed in lung, liver and kidney

Glypican 3 (GPC3) Antibody (C-term) - Protocols

Provided below are standard protocols that you may find useful for product applications.

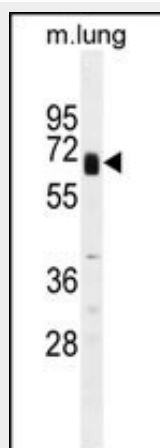
- [Western Blot](#)
- [Blocking Peptides](#)
- [Dot Blot](#)
- [Immunohistochemistry](#)
- [Immunofluorescence](#)
- [Immunoprecipitation](#)
- [Flow Cytometry](#)
- [Cell Culture](#)

Glypican 3 (GPC3) Antibody (C-term) - Images

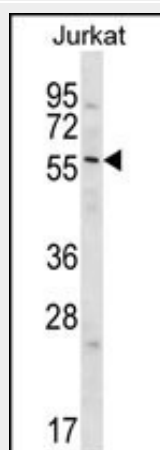


Immunofluorescence staining of anti-GPC3 Pab (cat# AP6340d) on HepG2 cells. The cells were acetone fixated. Antibody dilution of 1:50. Original magnification 1:400. Data and protocol

courtesy of Dr. Mariana Dabeva, Department of Medicine at Albert Einstein College of Medicine.



GPC3 Antibody (P544) (cat# AP6340d) western blot analysis in mouse lung tissue lysates (35ug/lane). This demonstrates the GPC3 antibody detected the GPC3 protein (arrow).



GPC3 Antibody (P544) (cat# AP6340d) western blot analysis in Jurkat cell line lysates (35ug/lane). This demonstrates the GPC3 antibody detected the GPC3 protein (arrow).

Glypican 3 (GPC3) Antibody (C-term) - Background

GPC3 is a cell surface proteoglycan that bears heparan sulfate. This protein may be involved in the suppression/modulation of growth in the predominantly mesodermal tissues and organs, and may play a role in the modulation of IGF2 interactions with its receptor and thereby modulate its function. Members of the glypican-related integral membrane proteoglycan family contain a core protein anchored to the cytoplasmic membrane via a glycosyl phosphatidylinositol (GPI) linkage. These proteins may play a role in the control of cell division, growth regulation, and tumor predisposition. Deletion mutations in GPC3 are the cause of Simpson-Golabi-Behmel syndrome (SGBS), also known as Simpson dysmorphia syndrome (SDYS). SGBS is a condition characterized by pre- and postnatal overgrowth (gigantism) with visceral and skeletal anomalies.

Glypican 3 (GPC3) Antibody (C-term) - References

- Nakatsura, T., et al., Clin. Cancer Res. 10(19):6612-6621 (2004).
- Boily, G., et al., Br. J. Cancer 90(8):1606-1611 (2004).
- Wichert, A., et al., Oncogene 23(4):945-955 (2004).
- Midorikawa, Y., et al., Int. J. Cancer 103(4):455-465 (2003).
- Sung, Y.K., et al., Cancer Sci. 94(3):259-262 (2003).